

December 30, 2016



Re: Public Hearing Announcement  
Osceola Parkway Extension from West of Boggy Creek Road to the Proposed  
Northeast Connector Expressway, and Boggy Creek Road/SR 417 Access Road  
Project Development and Environment (PD&E) Study  
Financial Project ID Numbers: 432134-1-22-01 & 432134-2-22-01  
Osceola County, Florida

Dear Property Owner/Interested Individual:

The Osceola County Expressway Authority will hold a Public Hearing for the Osceola Parkway Extension PD&E Study from west of Boggy Creek Road to the proposed Northeast Connector Expressway and a two-mile extension. The study also includes the Boggy Creek Road/SR 417 Access Road. The hearing will be held on Tuesday, January 24, 2017, at Osceola Heritage Park Exhibition Building, 1901 Chief Osceola Trail, Kissimmee, Florida 34744. The hearing will begin as an open house at 5:30 p.m. with a formal presentation at 6:30 p.m. followed by a public comment period. A project newsletter which includes a location map for the hearing, project limits and other important information about the project is enclosed.

**Atlee Mercer**  
Chairman

**Bob Healy**  
Board Member

**William Folsom**  
Vice-Chairman

**Thomas White**  
Secretary

**Arturo Otero**  
Board Member

**Noranne Downs**  
FDOT District 5

**Jeffrey Jones**  
Executive Director

This Public Hearing is being conducted to give interested persons an opportunity to express their views concerning the location, conceptual design, and social, economic, and environmental effects of the proposed improvements. Draft project documents will be available for public review at the Public Hearing, from January 3, 2017 to February 3, 2017 at the Osceola County Administrative Building, Public Works (Suite 3100), 1 Courthouse Square, Kissimmee, Florida 34741 and on the project website, [www.osceola-parkway.com](http://www.osceola-parkway.com).

Persons wishing to submit written statements, in place of or in addition to oral statements, may do so at the hearing or by sending them to me at Osceola County, 1 Courthouse Square, Suite 1100, Kissimmee, FL 34741 or by email at [jjon3@osceola.org](mailto:jjon3@osceola.org). All statements postmarked on or before Friday, February 3, 2017 will become a part of the Public Hearing record.

Public participation is solicited without regard to race, color, national origin, age, sex, religion, disability or family status. Persons who require special accommodations under the Americans with Disabilities Act or persons who require translation services (free of charge) should contact Ms. Vianed Aldebol at (407) 742-4200 or by email at [vianed.aldebol@osceola.org](mailto:vianed.aldebol@osceola.org) at least seven days prior to the hearing.

If you have questions about the project or scheduled Public Hearing, please contact the Consultant Project Manager, Mr. Paul Cherry, P.E., at (561) 840-0803 or by email at [paul.cherry@kimley-horn.com](mailto:paul.cherry@kimley-horn.com). For additional project information, you may also visit the project website [www.osceola-parkway.com](http://www.osceola-parkway.com).

Sincerely,

A handwritten signature in black ink that reads 'Jeffrey Jones'.

Jeffrey Jones, AICP  
Executive Director

**OCX**

3 Courthouse Square  
2<sup>nd</sup> Floor Suite 215  
Kissimmee, FL 34741  
PH: (407) 742-2395  
Fax: (407) 742-4202  
[www.osceolaxway.org](http://www.osceolaxway.org)

Enclosure: Project Newsletter

# OSCEOLA PARKWAY EXTENSION

Project Development and Environment (PD&E) Study

Financial Project ID Numbers 432134-1-22-01 & 432134-2-22-01

Newsletter No. 3

January 2017

The Osceola County Expressway Authority (OCX) is conducting a PD&E Study for a proposed new tolled expressway called the Osceola Parkway Extension. This study has evaluated improvements from the existing Osceola Parkway, west of Simpson Road, to the Proposed Northeast Connector Expressway, with a connection to SR 417. After reviewing multiple alternatives, the recommended build alternative is a 4-lane tolled expressway that extends south from SR 417 at the existing interchange serving the Orlando International Airport Southern Access Road, then east along the north side of the Osceola County, Orange County line, then south to connect to the planned Northeast Connector Expressway. A two-mile extension to the east is also included.

## WE NEED YOUR INPUT

At a Public Hearing for Osceola Parkway Extension

When: Tuesday, January 24, 2017

Open House at 5:30 PM

Formal Presentation at 6:30 PM

Where: Osceola Heritage Park Exhibition Building

1901 Chief Osceola Trail

Kissimmee, FL 34744

## Public Hearing Purpose

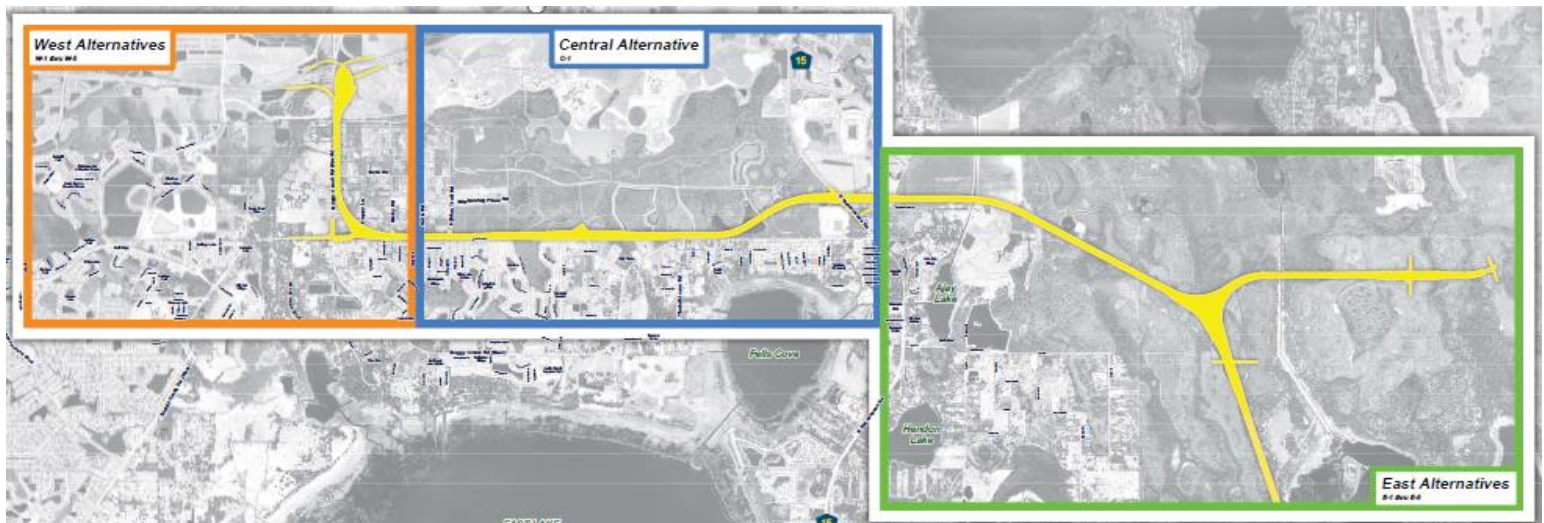
The purpose of this Public Hearing is to share information with the general public about the proposed improvement; its conceptual design; and the potential social, economic, and environmental impacts upon the community. The Public Hearing also serves as an official forum providing an opportunity for the public to express their opinions and concerns regarding the project. Public participation at this hearing is encouraged and solicited without regard to race, color, national origin, age, sex, religion, disability, or family status.

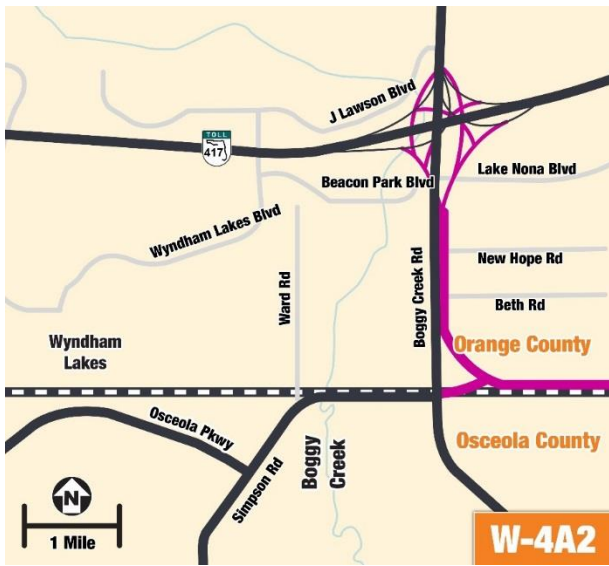
## Public Hearing Format

The Public Hearing, scheduled for January 24, 2017, will begin with an open house starting at 5:30 p.m. with a formal presentation at 6:30 pm. A public comment period will follow this presentation, where attendees will have the opportunity to provide oral statements at the microphone, provide comments to the court reporter, or provide them in writing. Team members will be available to answer questions one-on-one at any time during the open house from 5:30 p.m. to 6:30 p.m. as well as after the comment period. Members of the public may submit written comments at the hearing or by contacting Mr. Jeffrey Jones (contact information on reverse side) by February 3, 2017. Persons who require special accommodations under the Americans with Disabilities Act or persons who require translation services (free of charge) should contact Ms. Vianed Aldebol (contact information on reverse side) at least seven (7) days prior to the Public Hearing.

## Project History and Next Steps

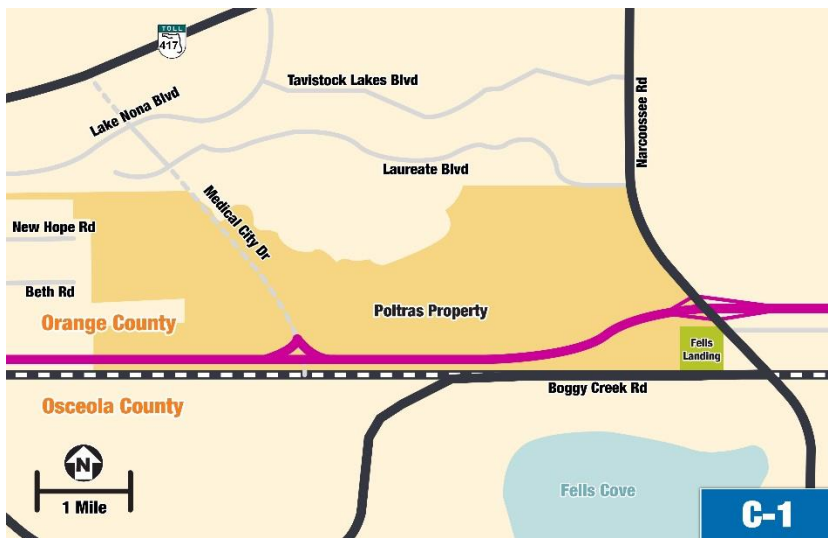
The Osceola Parkway Extension PD&E Study began in July 2012 and a Public Kick-Off Meeting was held in March 2013. An Alternatives Meeting was held in July 2014 with subsequent Community meetings held in April 2015 to address the western and central segments, and in November 2015 to discuss the eastern segments. Throughout the study, numerous meetings have been held with citizens, local governments and review agencies. Following the Public Hearing, public input will be considered and a decision to either build or not build the Osceola Parkway Extension will be made by the Osceola County Expressway Authority Board in early 2017.





## Western Segment

The western section of the expressway begins with an interchange at S.R. 417 with ramps connecting to S.R. 417 as well as to the Orlando International Airport Southern Access Road. The expressway extends south along the east side of Boggy Creek Road before traveling to the east along the north side of the Orange and Osceola County line. Another interchange is provided at Simpson Road at Boggy Creek Road (ramps to/from the expressway from the east leg of this intersection). Prompted by public comments received at Community Meetings a bridge was added at New Hope Road connecting to Boggy Creek Road to improve access into the community east of Osceola Parkway Extension.

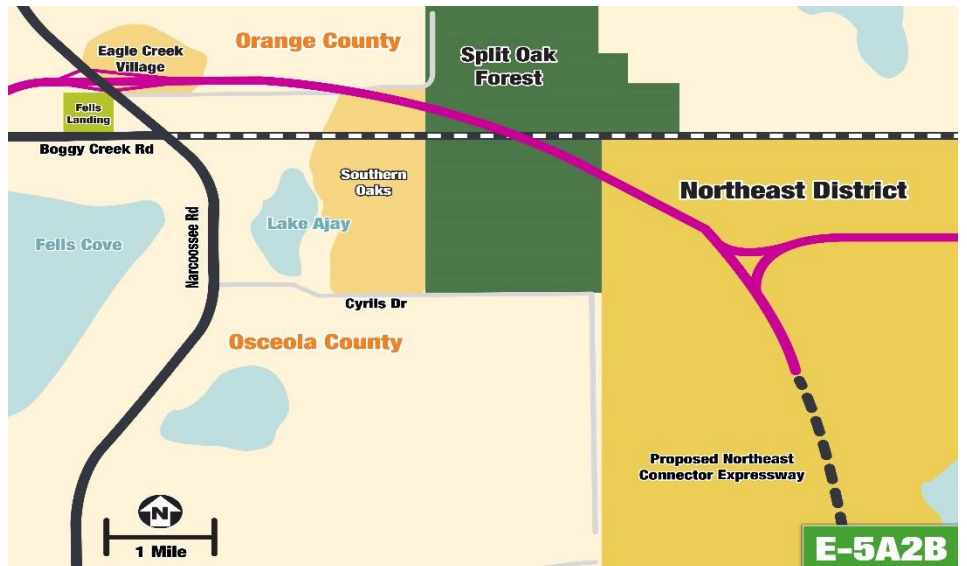


## Central Segment

The central section extends east along the north side of the Orange and Osceola County line before shifting north to provide sufficient separation of the Osceola Parkway Extension interchange with Narcoossee Road and the intersection of Narcoossee Road with Boggy Creek Road, and to avoid the Fells Landing subdivision. Interchanges are provided at the planned Medical City Drive and at Narcoossee Road. An underpass is provided to allow access to/from Boggy Creek Road through property owned by Greater Orlando Aviation Authority (GOAA) in Osceola County (approximately two miles west of Narcoossee Road). In addition, a pedestrian tunnel is provided which connects to sidewalks on the west side of Narcoossee Road to allow pedestrians to travel under the Osceola Parkway Extension expressway to avoid crossing at the expressway ramps.

## Eastern Segment

The eastern section extends east from Narcoossee Road, avoids planned developments north and east of Lake Ajay, enters Split Oak Forest, then travels southeast just south of a large pond in Orange County, and then travels east to the two-mile extension. A system to system interchange is provided to connect Osceola Parkway Extension with the two-mile extension and the Northeast Connector Expressway. An interchange serving the Northeast District is provided with an extended Cyrils Drive.



## Contact Information

Mr. Jeffrey Jones, AICP  
 Executive Director, Osceola County  
 1 Courthouse Square, Suite 1100  
 Kissimmee, FL 34741  
[jjon3@osceola.org](mailto:jjon3@osceola.org)  
 (407) 742-2395

Ms. Vianed Aldebol  
 Senior Administrative Assistant, Osceola County  
 3 Courthouse Square, 2nd Floor  
 Kissimmee, FL 34741  
[vianed.aldebol@osceola.org](mailto:vianed.aldebol@osceola.org)  
 (407) 742-4200